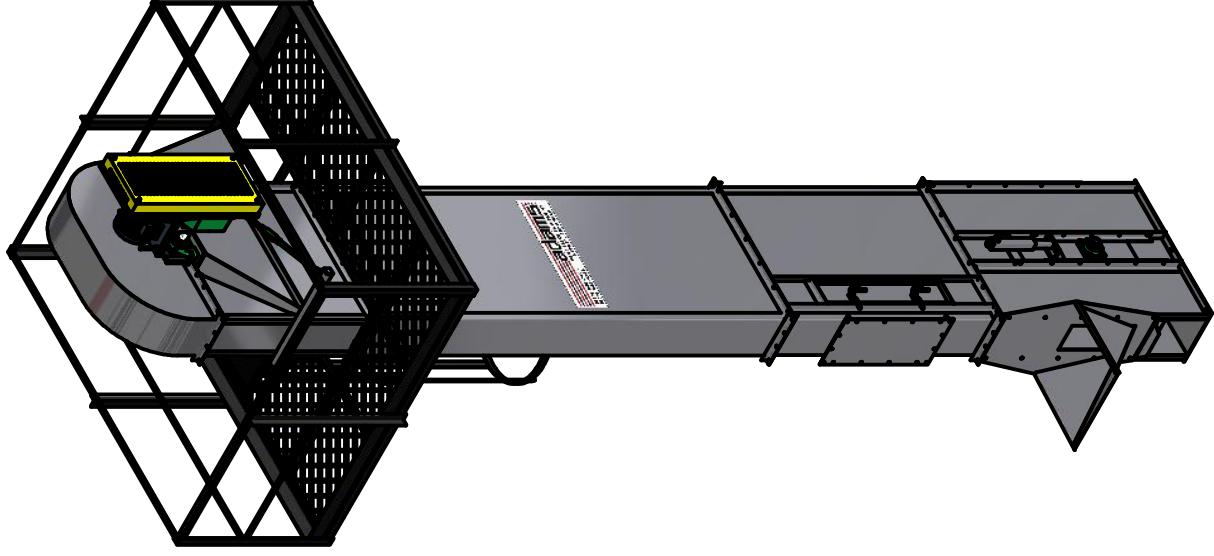


ADAMS FERTILIZER EQUIPMENT BUCKET ELEVATOR PARTS MANUAL

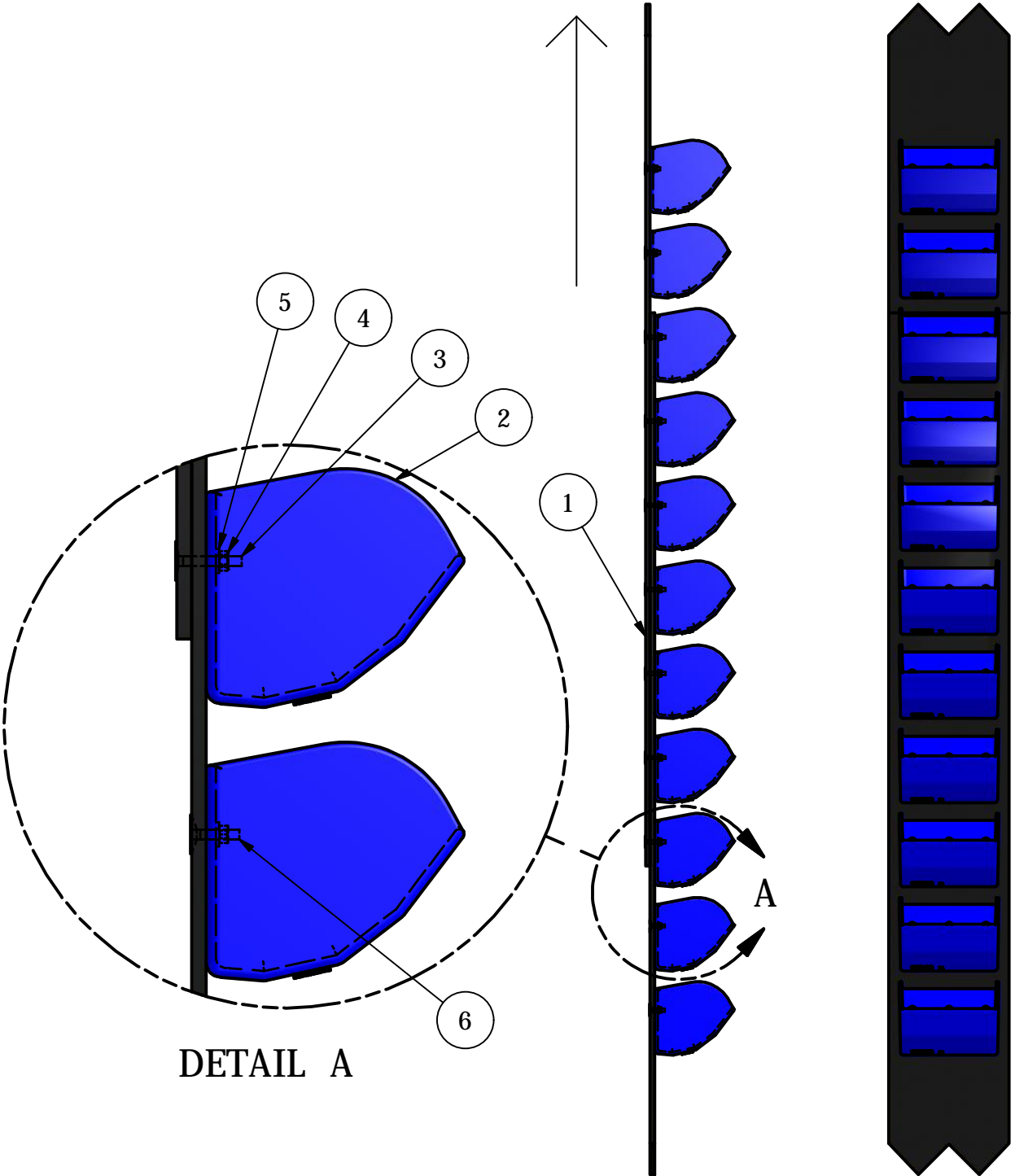


CALL TOLL FREE 1-800-643-4266

870-946-2494 FAX: 870-946-4396

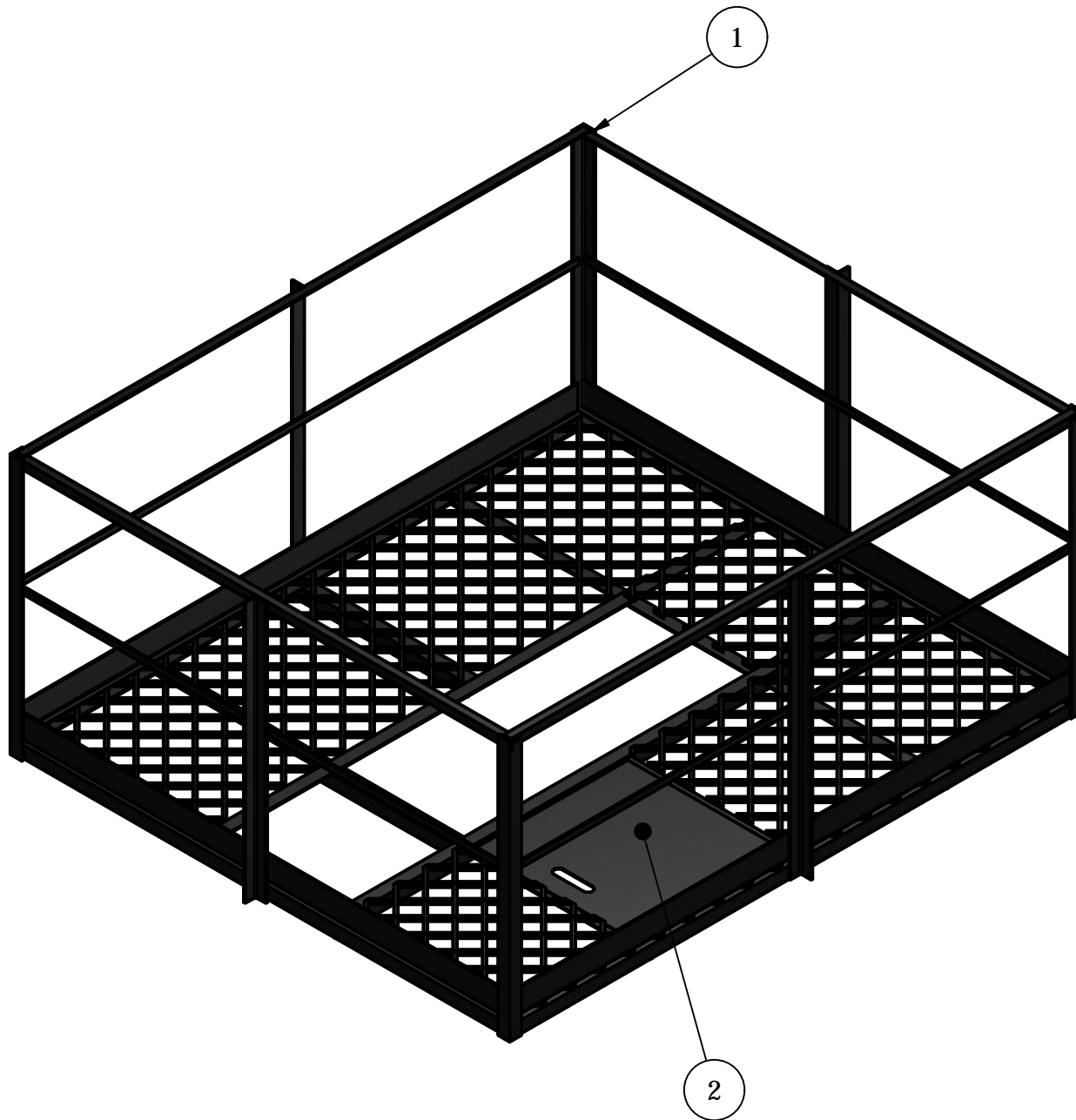
WEBSITE: www.adamsfertequip.com EMAIL: adams@adamsfertequip.com

Belt Overlap Assembly



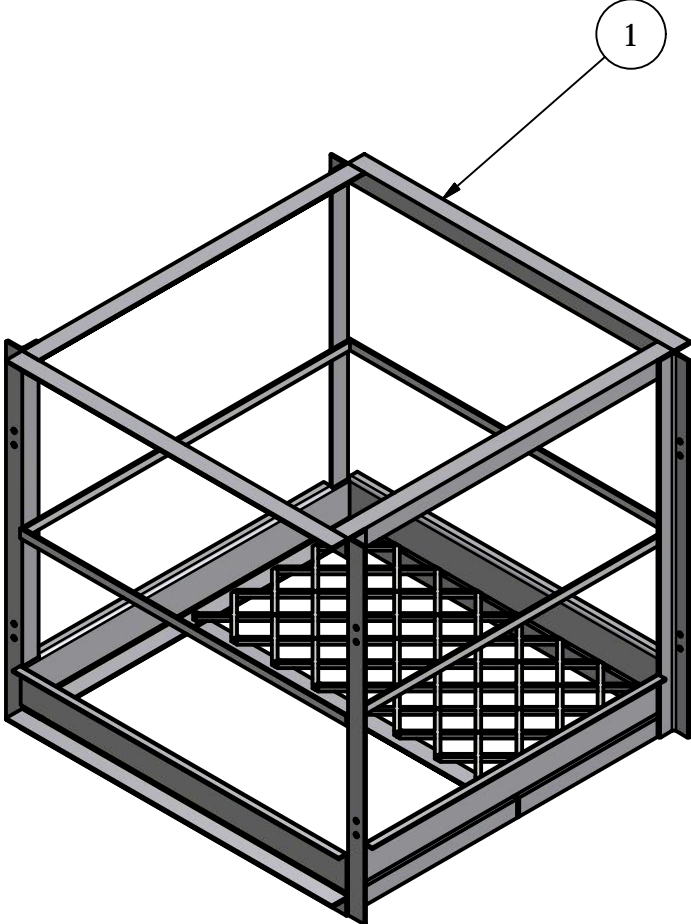
PARTS LIST		
ITEM	PART NUMBER	DESCRIPTION
1	10585	Belt
2	10586	Bucket
3	10587	Flat Head 1/4" x 1 1/2" Bolt (S.S)
4	10588	Nylon Lock Nut (S.S)
5	10589	Plain Washer
6	10590	Flat Head 1/4" x 1 1/4" Bolt (S.S)

Work Platform Assembly



PARTS LIST			
ITEM	QTY	PART NUMBER	DESCRIPTION
1	1	8028	Work Platform Wldt.
2	1	80020	Door

REST PLATFORM ASSEMBLY



RESTPLATFORM PARTS LIST			
ITEM	QTY	PART NUMBER	DESCRIPTION
1	1	8024	Rest Platform Wldt.

SAFETY INSTRUCTIONS

Recognizing the causes or hazards before an accident occurs can prevent accidents. Regardless of the care used in designing and constructing equipment, there are areas that cannot be completely safeguarded without interfering with the operation of the Elevator.

The machine has various kinds of decals indicating potential dangers.

D A N G E R: Indicates the most serious hazard with the highest potential for severe injury.

W A R N I N G: Indicates serious hazards.

CAUTION: Indicates practices to be followed to prevent injury.

SAFETY INSTRUCTIONS FOR OPERATIONS

1. DO NOT ALLOW anyone to operate your Adams Bucket Elevator without first reading and understanding all the safety and operations procedures in this manual.

Observe all Federal and State EPA regulations and all local, State and Federal laws regarding licensing, handling and application.

2. DO NOT ALLOW the following people to operate this equipment
 - ...Children
 - ...People under the influence of alcohol, medications, or other drugs that can impair or cause drowsiness.
3. Keep all safety shields and devices in place.
4. Make certain everyone is clear before operating equipment
5. Keep hands, feet, and clothing away from moving parts
6. Make sure machine is secured before operating
7. Shut off the power completely before adjusting, servicing, or cleaning
8. If any components of the Adams Bucket Elevator are not functioning properly, DO NOT use the equipment. Discontinue it from service until it has been repaired by a qualified service technician.
9. DO NOT replace parts with anything but Adams factory service parts. To do so may reduce the effectiveness of safety features or decrease the performance of the unit.

10. Replace decals that have become damaged, hard to read, or missing. Decals are available from Adams
11. Visually inspect the Bucket Elevator periodically during operation for signs of excessive vibration, loose fasteners and unusual noises.

OPERATING AND SERVICE INSTRUCTIONS

Pre-Operation Check List

1. Before operating your Adams Bucket Elevator for the first time, check the following
 - a. Make sure all the bolts are tight; be sure all the bracing and guy cables are secure and also check the safety shields, inspection covers and devices are in place.
 - b. Check adjustment of drive and lift belts
 - c. Check lubricant level in gear reducer
2. Check and readjust all belts to compensate for initial stretch after few hours of operation
3. Change the oil in the gear reducer after 150 hours of operation
4. Here are some of the things that should be inspected and serviced before each elevator operation:
 - a. Inspect bucket and belt for loose bolts, damaged buckets, belt condition and tension
 - b. Adjust the belt tension if necessary
 - c. Inspect V-Belt (motor drive belt) tension and condition
 - d. Inspect gear reducer lubricant level and add lubricant as required
 - e. Inspect head and boot pulley bearings and lubricate as required
 - f. Inspect for caked or packed deposits or any obstructions in the elevator

Operation

1. Start elevator with buckets empty. Run empty for a few minutes to flex the belt and check the alignment and tension
2. Feed material into elevator at a uniform rate within the rate capacity of the elevator
3. Stop elevator after the feed is discontinued and all the material is discharged. Cleanout elevator after each use

Shutdown and storage

1. Discontinue feed and empty elevator before shutting off power
2. Clean out elevator boot and remove residue
3. For extended shutdown do the following additional steps:
 - a. Clean elevator thoroughly
 - b. Lubricate bearings
 - c. Cover input hopper, motor and drive

Maintenance

1. The elevator should be checked to be sure all the buckets are attached to the belt and that all the bolts are tight
2. Usually the belt will stretch throughout the entire life, but the greatest increase in length will occur during the first few hours of operation. Using the belt adjuster in the boot section you can tighten the belt

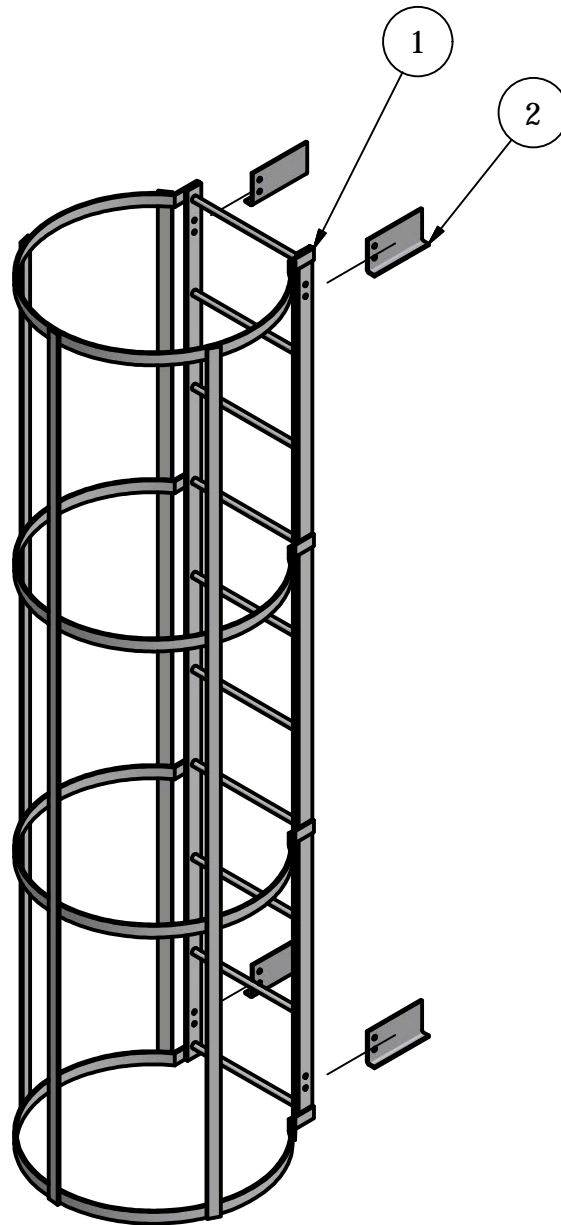
CAUTION: Check belt frequently to make certain that it is running in center of pulley and the tension is properly set otherwise it can quickly wear a hole in the side of the head, casing or boot sections

3. Check and tighten bucket bolts after first 10 hours of operation and thereafter check every 50 hours of operation
4. Grease all bearings every 24 hours of operation with one pump

CAUTION: Do not over-grease sealed bearings, as it may break the seal allowing contamination to work into the bearing causing it to fail.

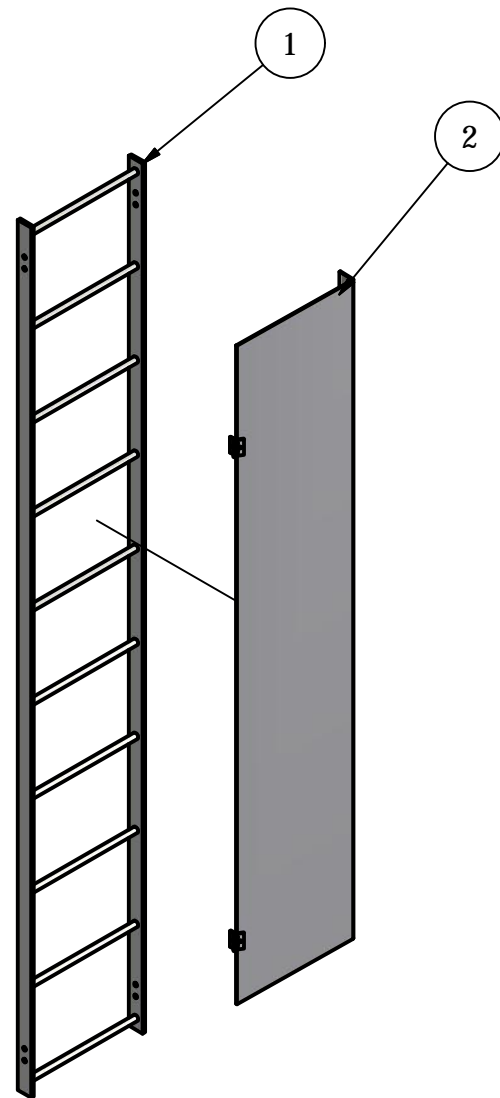
5. Change lubricant oil in Gear Reducer once every year with only 90 weight gear oil with GL-5 rating (90W GL-5)
6. Lubricate motor bearings every 6 months with only Exxon POLYREX[®] EM Polyurea Grease

SAFETY LADDER ASSEMBLY



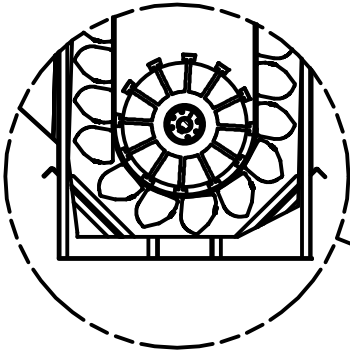
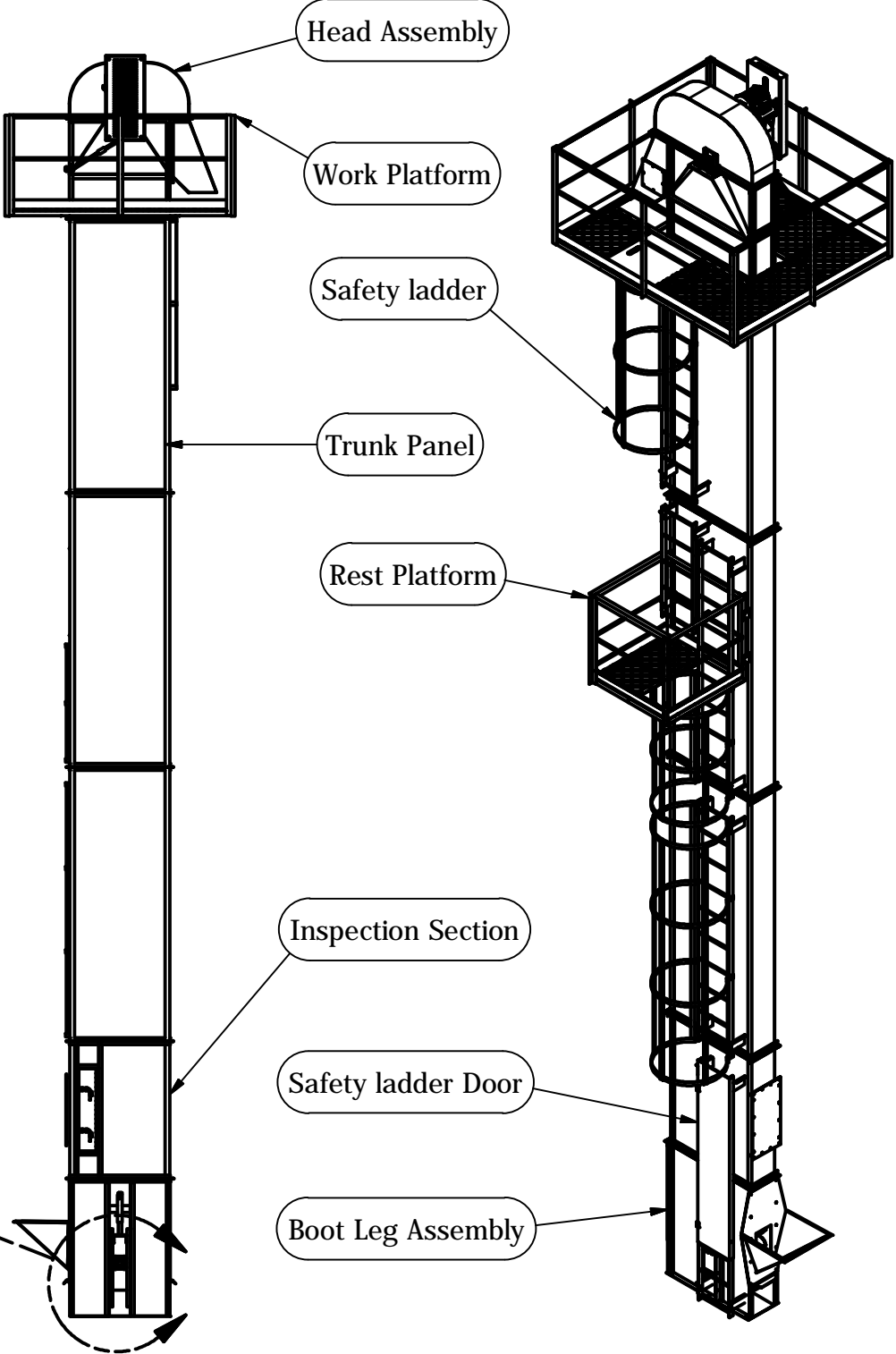
PARTS LIST			
ITEM	QTY	PART NUMBER	DESCRIPTION
1	1	8026	Complete Safety Ladder
2	2	80266	Safety Ladder Mount

LOWER SECTION SAFETY LADDER

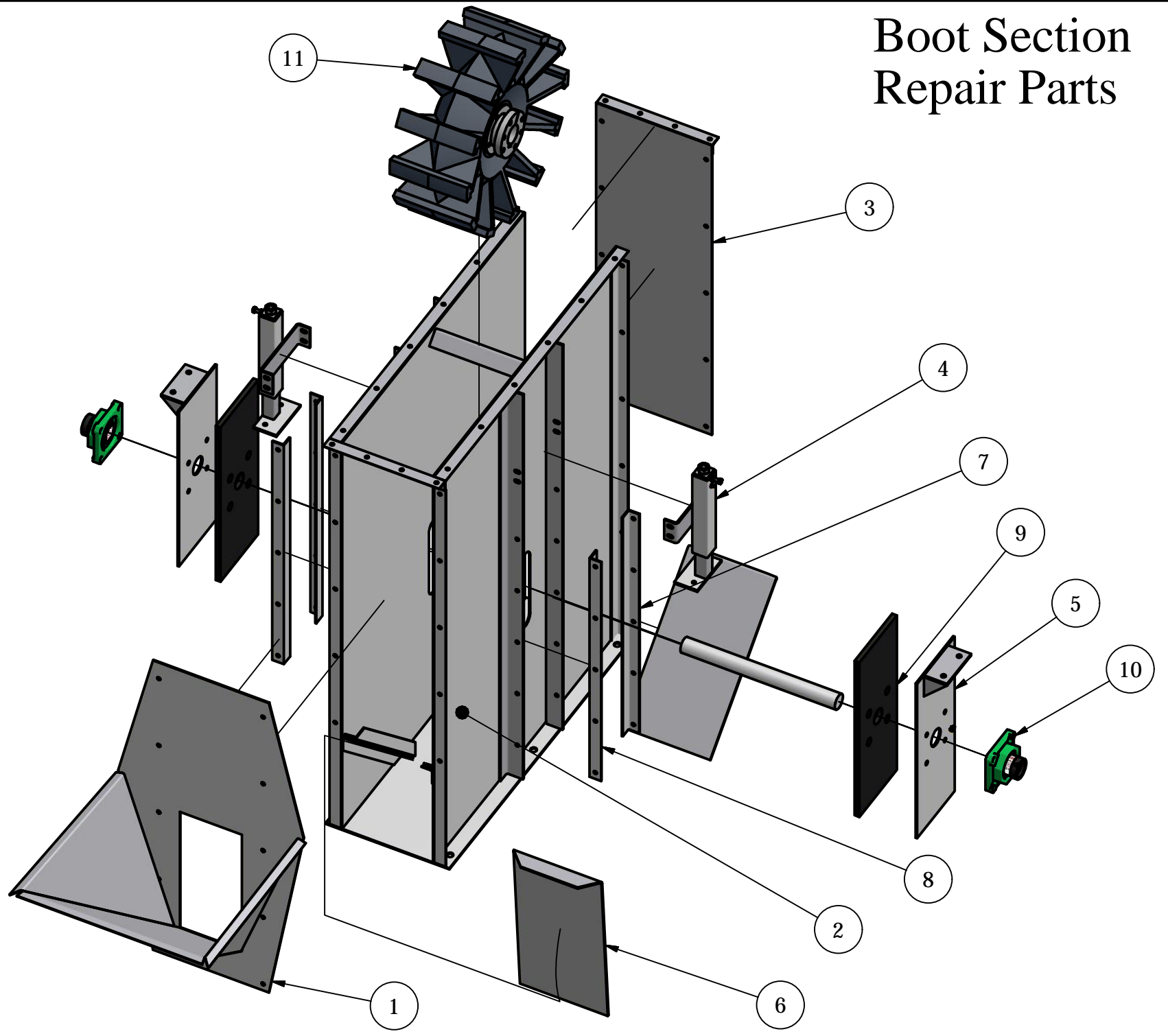


PARTS LIST			
ITEM	QTY	PART NUMBER	DESCRIPTION
1	1	8025	Safety Ladder Wldt.
2	1	80265	Safety Door

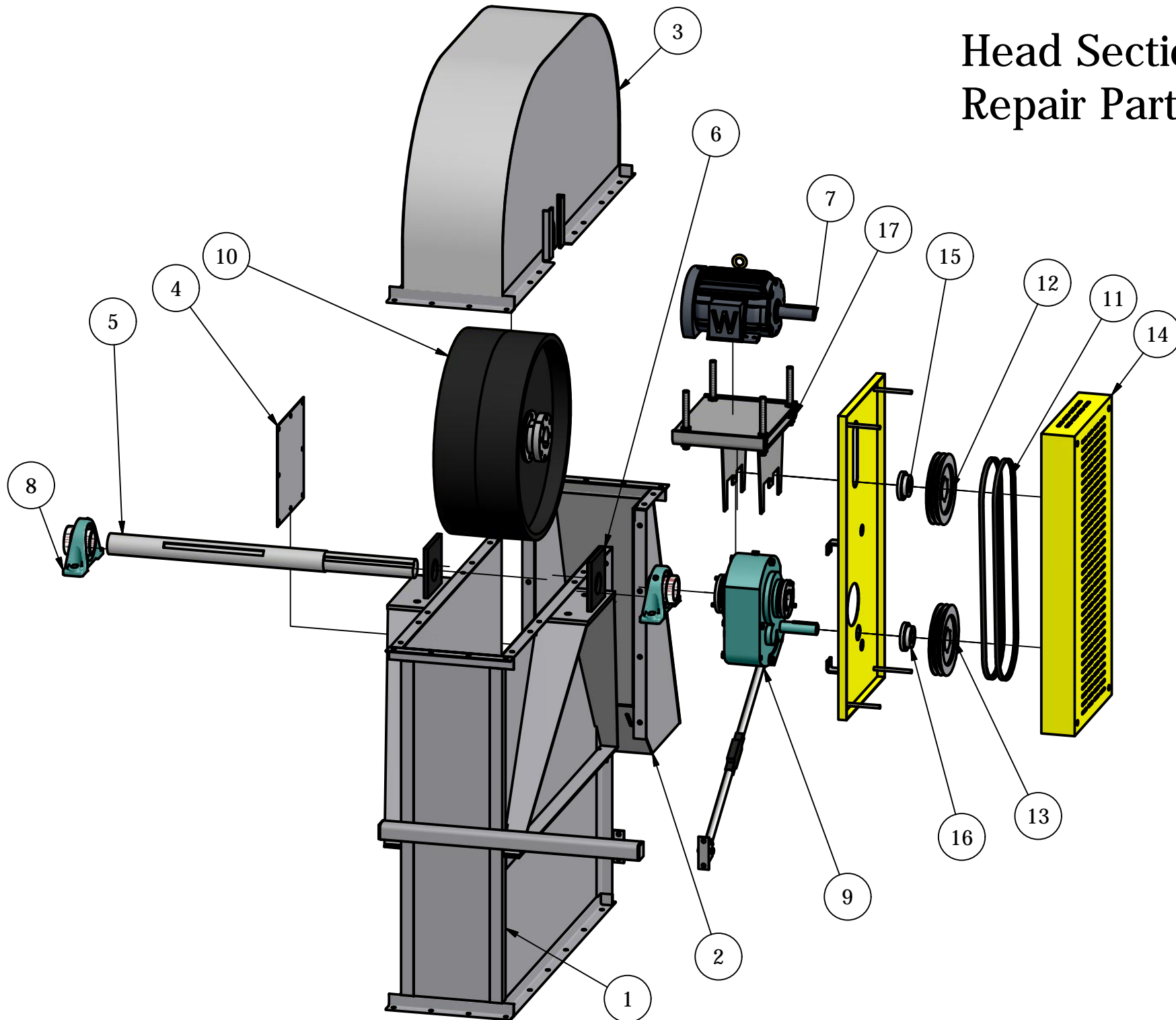
MAIN ASSEMBLY



Boot Section Repair Parts

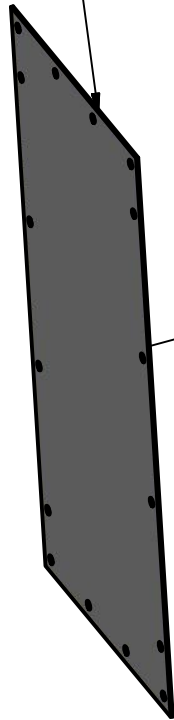


Head Section Repair Parts

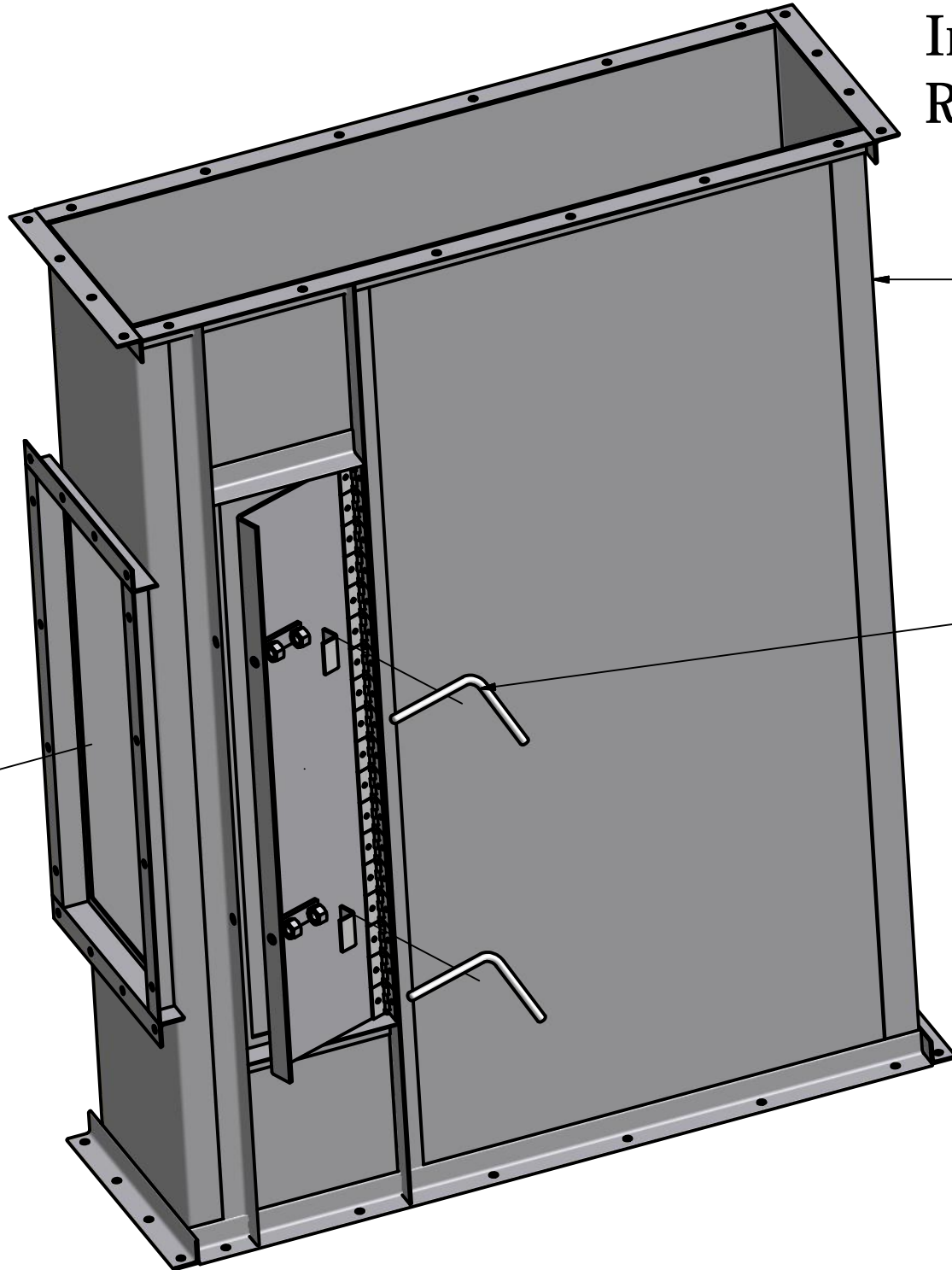


Inspection Section Repair Parts

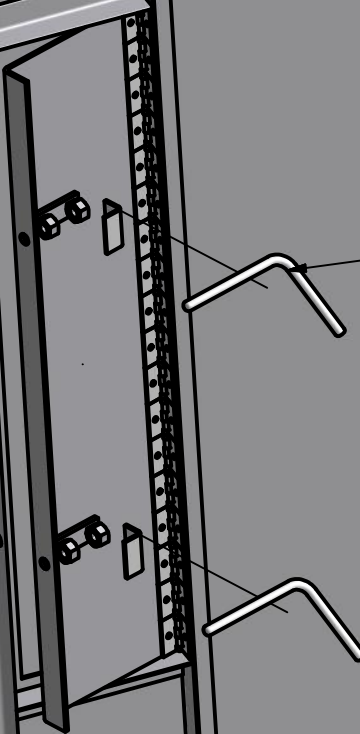
2



1



3

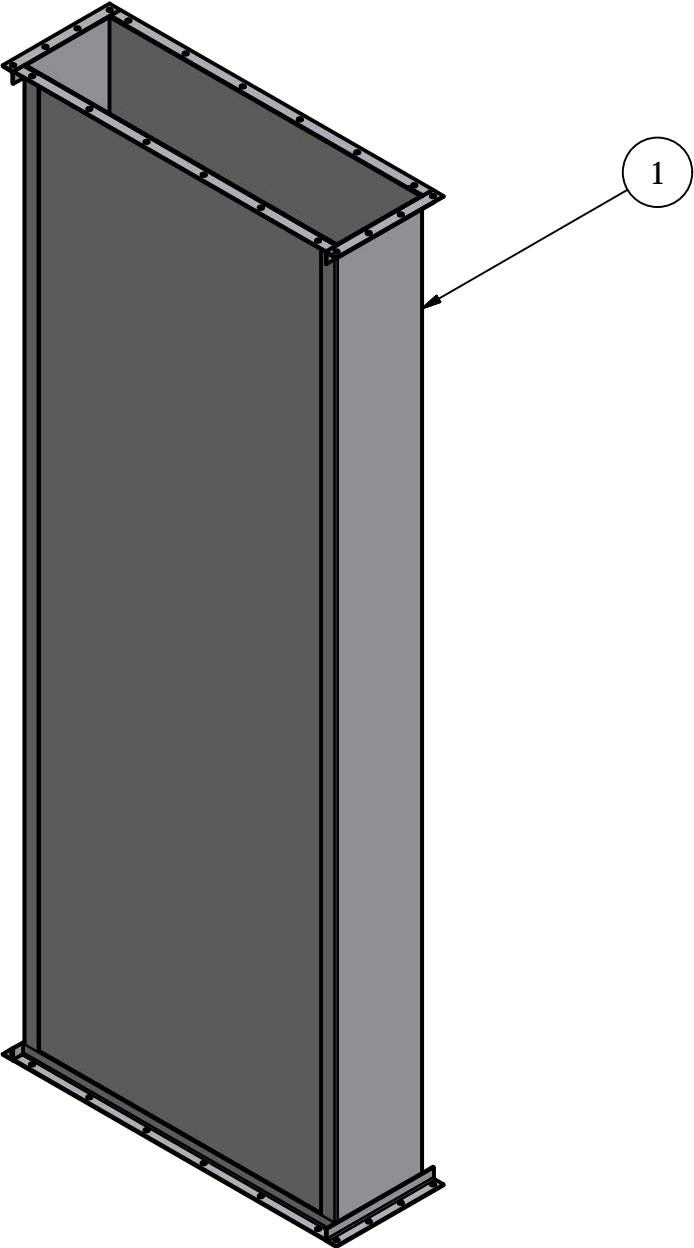


BOOT SECTION PARTS LIST			
ITEM	QTY	PART NUMBER	DESCRIPTION
1	1	8018	Intake Section Wldt.
2	1	8019	Boot Section Wldt.
3	1	8020	BackSide Boot Section Wldt.
4	2	8021	Belt Adjuster Wldt.
5	2	8022	Belt Adjuster Slider Wldt.
6	1	80217	Boot Cleanout Door
7	2	80222	Slider Angle Iron (RH)
8	2	80222	Slider Angle Iron (LH)
9	2	10582	UHMW Sealer - Bottom
10	2	10583	Bottom Roller Shaft Bearing
11	1	10584	Boot Section Roller

HEAD SECTION PARTS LIST			
ITEM	QTY	PART NUMBER	DESCRIPTION
1	1	8015	Head Section Wldt.
2	1	8016	Discharge Section Wldt.
3	1	8017	Hood Section Wldt.
4	1	80270	Top Cleanout Door
5	1	80258	Head Shaft
6	2	10571	Black UHMW Sealer
7	1	10572	Motor
8	2	10573	Discharge Shaft Bearings
9	1	10574	Shaft Mount Speed Reducer
10	1	10570	Head Roller Assembly
11	2	10575	V-Belt
12	1	10576	Motor Grooved Pulley
13	1	10577	Speed Reducer Grooved Pulley
14	1	10578	Belt Guard
15	1	10579	Motor Pulley Hub
16	1	10580	Reducer Pulley Hub
17	1	10581	Motor Mount

INSPECTION SECTION PARTS LIST			
ITEM	QTY	PART NUMBER	DESCRIPTION
1	1	8023	Inspection Section Wldt.
2	1	80286	Inspection Door
3	2	80287	Cleanout Door Handle

TRUNK SECTION ASSEMBLY



PARTS LIST			
ITEM	QTY	PART NUMBER	DESCRIPTION
1	2	8027	Trunk Section Wldt.